

PART OF N.W. 1/4, SEC. 33, T.7N., R.2W., S.L.B. & M.

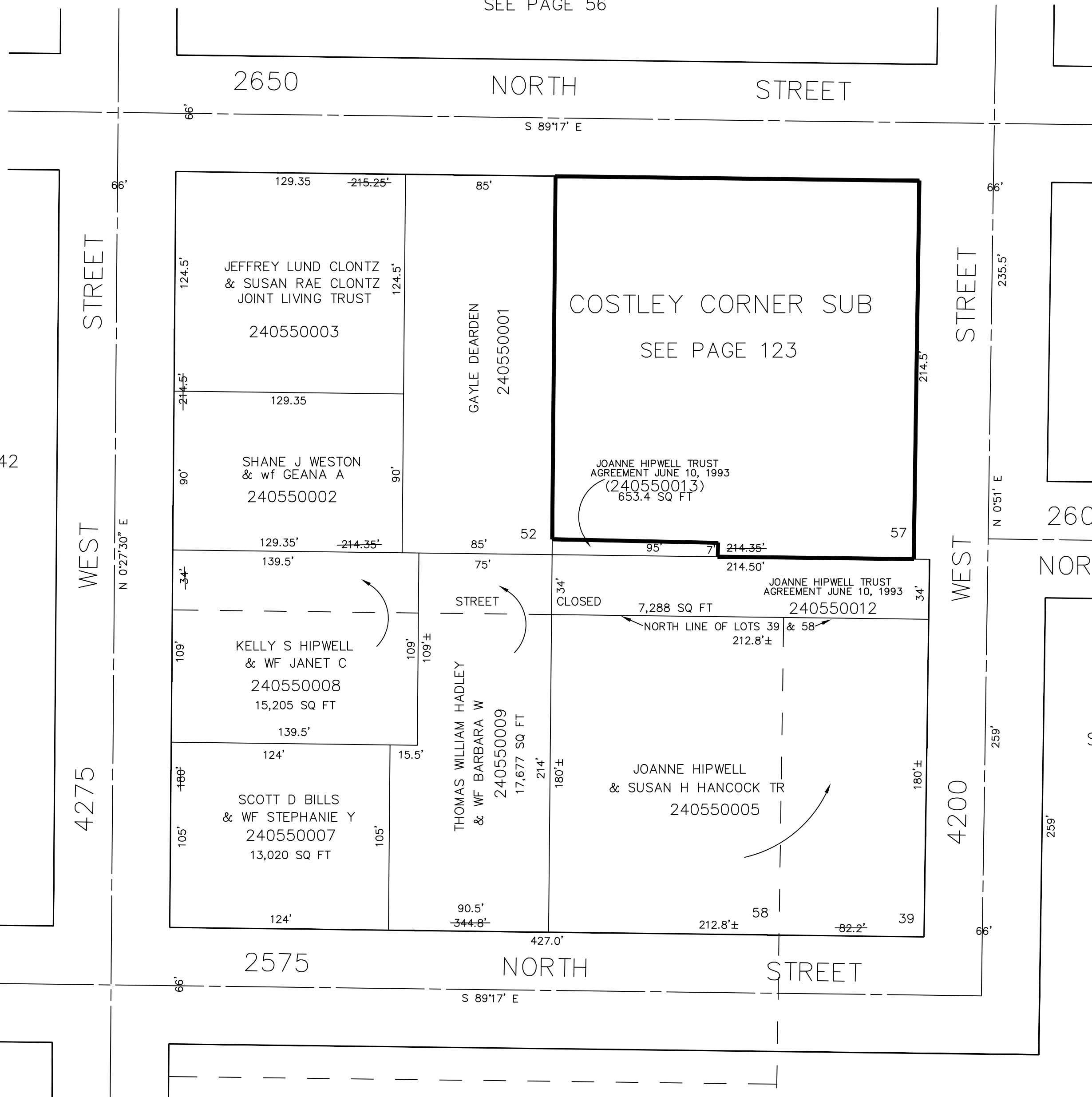
PLAIN CITY

PART OF LOTS 39 & 58, & ALL OF LOTS 52 & 57 PLAT B

TAXING UNIT: 21

SCALE 1" = 50'

SEE PAGE 56



SEE PAGE 42

SEE PAGE 54

SEE PAGE 50

SEE PAGE 50

SEE PAGE 51

SEE ORIGINAL DEDICATION PLAT OF PLAIN CITY IN BOOK 5, PAGE 80 OF RECORDS.